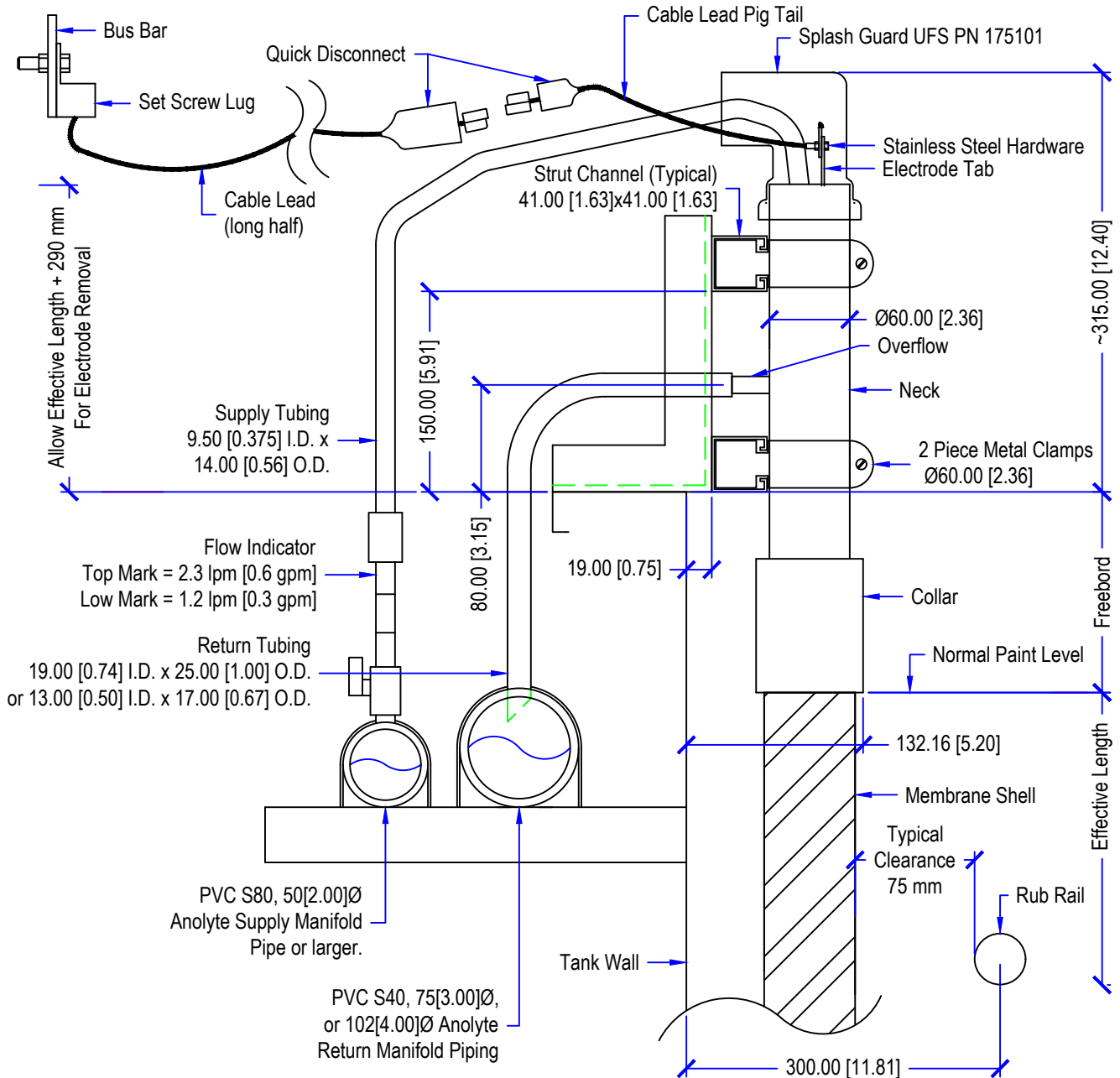


Effective Length		Recommended Amp Capacity of Cable Lead	Recommended Amp Capacity of Set Screw Lug	Recommended Clamp Type
MM	IN			
910	35.80	75	225	Metal or Plastic
1400	55.12	75	225	Metal or Plastic
1900	74.80	75	400	Metal or Plastic
2300	90.60	75	400	Metal
2900	114.20	75	400	Metal



SIDE VIEW

**Small Diameter Membrane Electrode Cell
Typical Installation Diagram**



UNITS: MM/IN

SCALE: NONE

UFS PN: 997112

SHEET 1 OF 1

DATE: 5/18/16

UFS Corporation
330 North 400 East
Valparaiso, IN 46383 USA
Tel: (219) 464-2027
Fax: (219) 464-8646
www.ufsc.com
Sales Ext. 17
Customer Service Ext. 28
Production Ext. 24
Engineering Ext. 14